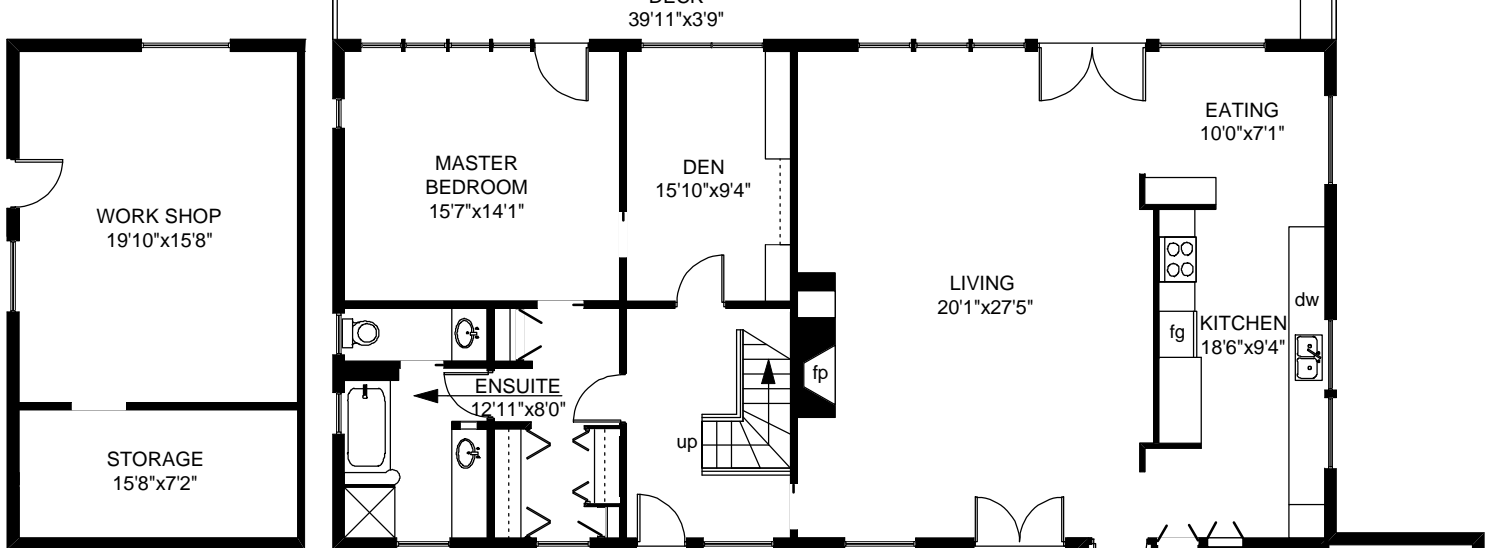


10970 SETCHELL ROAD

MAIN FLOOR
2242 SQ.FT

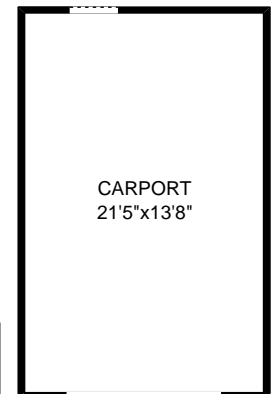


LOWER FLOOR
485 SQ.FT

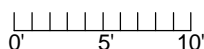
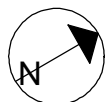


UPPER FLOOR
644 SQ.FT

CARPORT
313 SQ.FT



	FINISHED SQ. FT.	UNFINISHED SQ. FT.	TOTAL SQ. FT.
MAIN	2242	0	2242
UPPER	501	143	644
LOWER	0	485	485
TOTAL	2743	628	3371
DECKS	0	405	405
CAR PORT	0	313	313



MEASURED ON: 04/27/06
DRAWING FILE: 01967

Tafe Measure VICTORIA, B.C.
Ph. 883-8894
www.tafemeasure.com